

# Food-waste measurement: Experiences from the UK

Dr Tom Quested  
Lead Analyst  
14 July 2019





# Content

- **WRAP: background to measurement**
- **Food Waste measurement:**
  - General remarks
  - Retail
  - Manufacturing
  - Household

# **WRAP's Vision**

**A world in which  
resources are used  
sustainably**



**Courtauld 2025**  
is an ambitious voluntary  
agreement that brings  
together a broad range of  
organisations involved in the  
food system to make food and  
drink production and  
consumption more  
sustainable.



Action will  
be delivered  
through  
collaboration,  
harnessing the  
power of  
partnerships, shared  
expertise and  
innovation



# Our collective ambition

is to cut the amount of resource needed to provide our food & drink by

**one fifth in ten years**

## Targets

**20%**  
reduction in  
food and drink  
waste

**20%**  
reduction  
in GHG

## Food producers / manufacturers

c. 20-30% coverage



## Retailers

c. 95% coverage



## HaFS



## Supporting organisations



# Food Waste Reduction Roadmap

## Industries:

Production and  
manufacture  
Hospitality and  
Food Service (HaFS)  
Retail

Large business =  
>250 employees  
Food =  
food and drink

Own  
operations

Supporting  
suppliers and  
consumers

Reporting  
Milestones



More info at: <http://www.wrap.org.uk/food-waste-reduction-roadmap>

# Different uses, different needs

Can be lower accuracy  
May not require many details

Lower accuracy  
Requires detail

Create case  
for change

Understand &  
Prioritise

Evaluate

Track  
progress

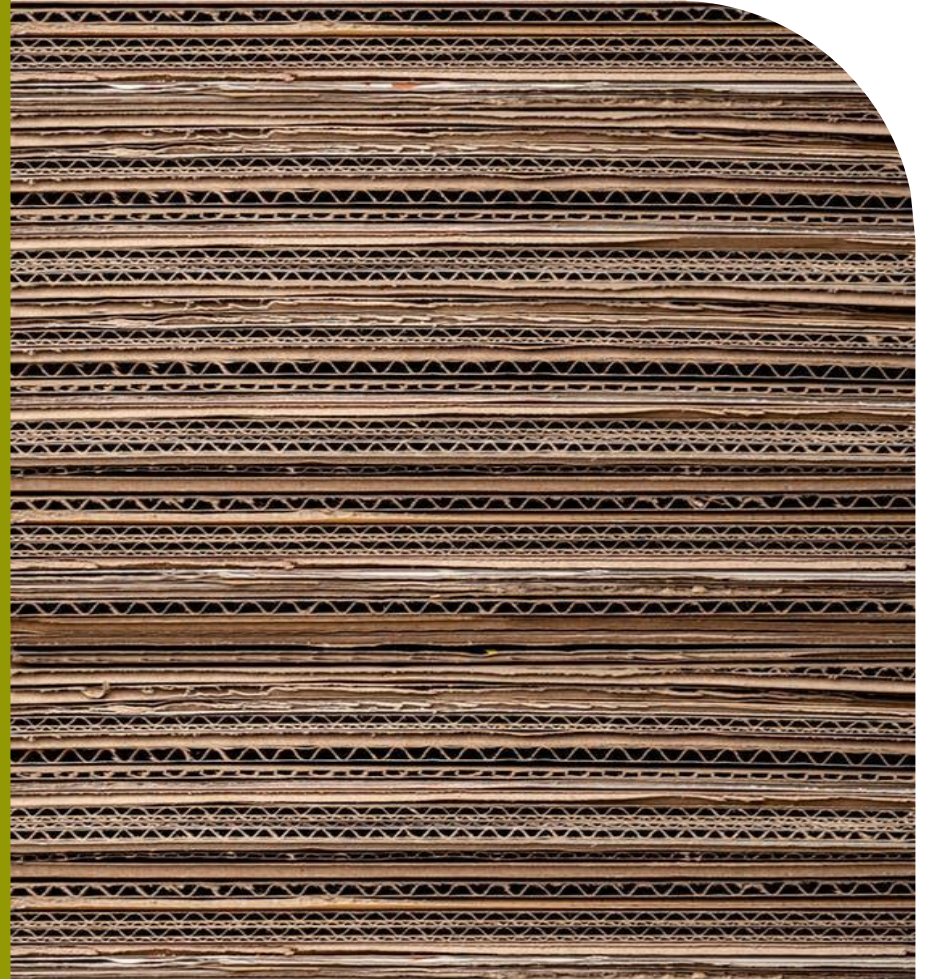
Higher accuracy  
May not require many details

Higher accuracy  
May not require many details



**How does the UK  
measure food  
waste?**

**Food retail**





# Retail: Method

- Data from Courtauld signatories
  - Around 85% of market supplied data
- Quality assure data
- Scale to account for missing market share





# Retail: Method

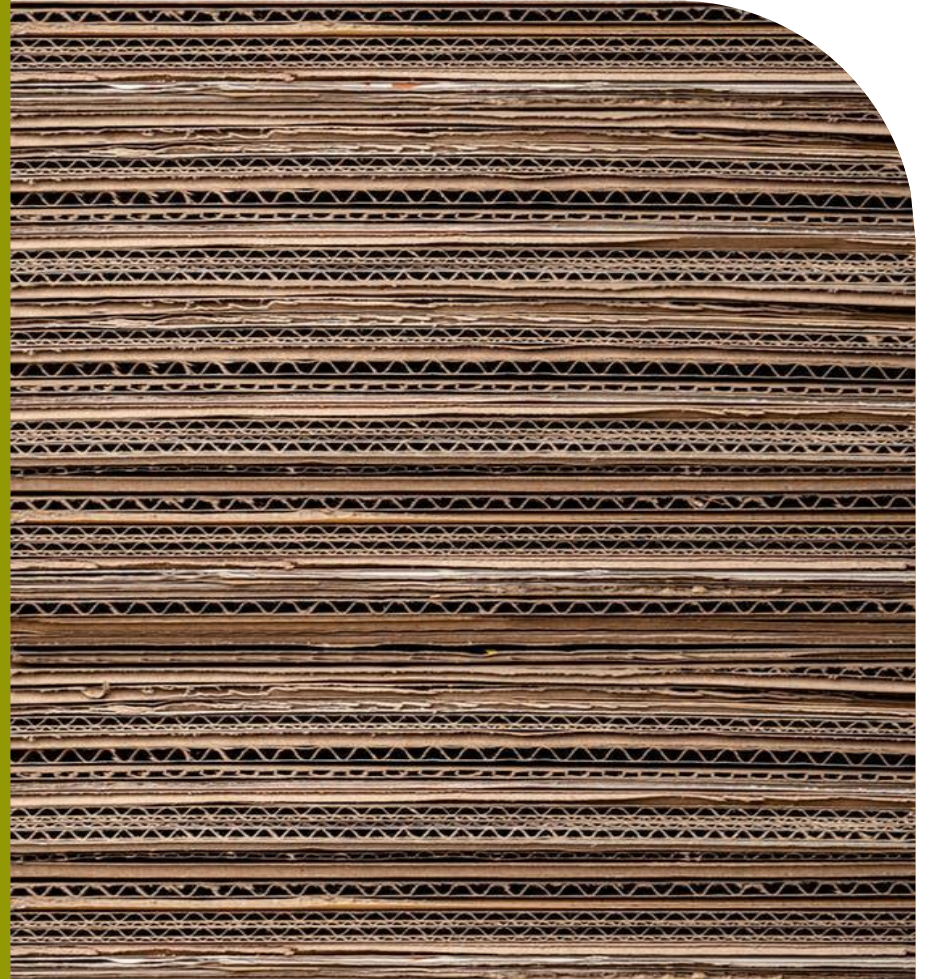
- Methods used by retailers for quantification:
  - Direct weighing of separated food waste
  - Scanning of wasted items

More info:

<http://www.wrap.org.uk/sites/files/wrap/Courtauld%20Commitment%202025%20-%20baseline%20report%20for%202015.pdf>

**How does the UK  
measure food  
waste?**

**Food  
manufacturing  
/ processing**







# Manufacturing: Method

- Similar method for retailers not used
  - Insufficient coverage of sector
  - Signatories unlikely to be representative



# Manufacturing – method

No. of businesses, by:

- Size of business
- Subsector

Government business dataset

Waste per business, by:

- Size of business
- Subsector
- EWC codes

IPPC data reported to UK Environment Agency

% of waste that is food, by:

- Subsector
- EWC code

On-site assessment by WRAP

More info: <http://www.wrap.org.uk/sites/files/wrap/Courtauld%20Commitment%202025%20-%20baseline%20report%20for%202015.pdf>



# Manufacturing: Issues

- Expensive to obtain food waste factors (%s)
- IPPC data only for larger companies
- Small sample sizes
- Sludges and sewer waste – what % is food?

# Manufacturing – the future?



- Obtain sufficient data from businesses
- Ensure:
  - Common definition
  - Sufficiently robust method
- Precursor to acting

More info at: <http://www.wrap.org.uk/food-waste-reduction-roadmap>

# REFRESH – Voluntary Agreements

Voluntary agreement (VA)  
approach piloted in:

- Germany
- Hungary
- The Netherlands
- Spain

Different focus for each VA

- Sector
- Type of solution
- Partners

The diagram below illustrates the five key stages involved in developing an effective voluntary agreement.



Each step in the diagram above links to the section of the guide with further information and examples.

# Voluntary Agreements

Lessons learnt:

Data is not always forthcoming

The diagram below illustrates the five key stages involved in developing an effective voluntary agreement.



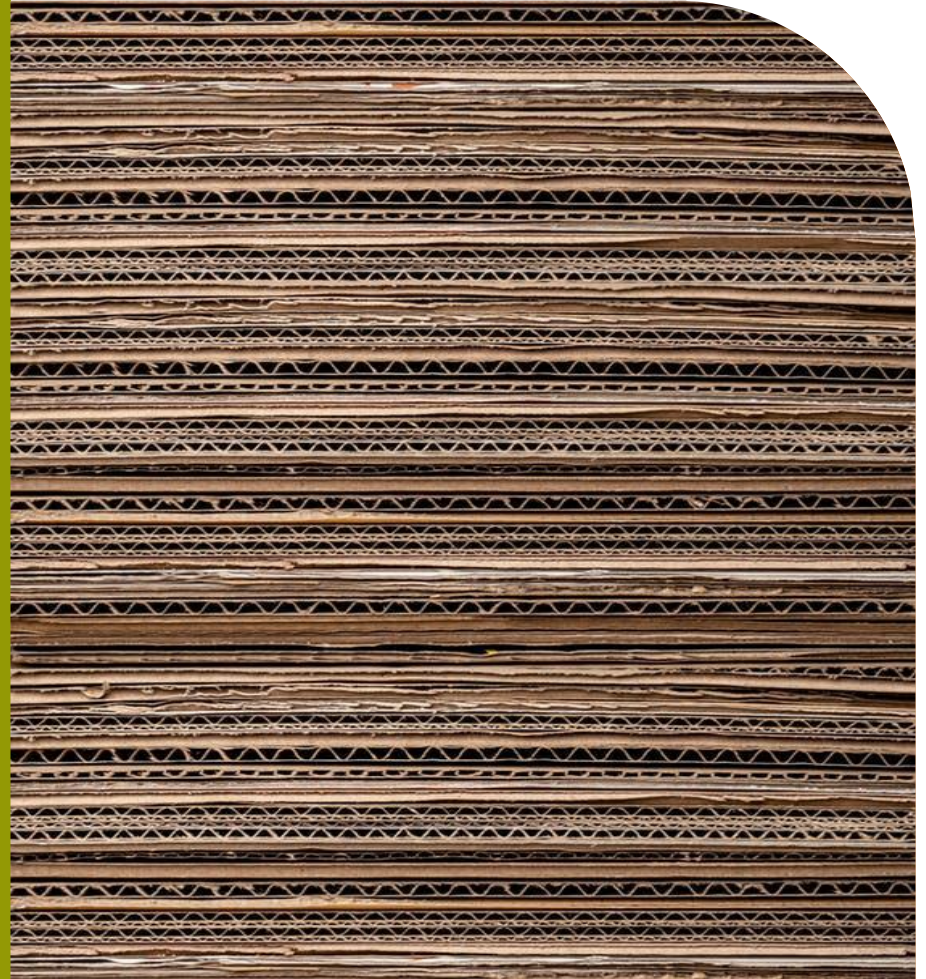
Each step in the diagram above links to the section of the guide with further information and examples.

Source: [http://www.wrap.org.uk/sites/files/wrap/WRAP\\_Global\\_Voluntary\\_Approach\\_to\\_Cutting\\_Food\\_Waste.pdf](http://www.wrap.org.uk/sites/files/wrap/WRAP_Global_Voluntary_Approach_to_Cutting_Food_Waste.pdf)

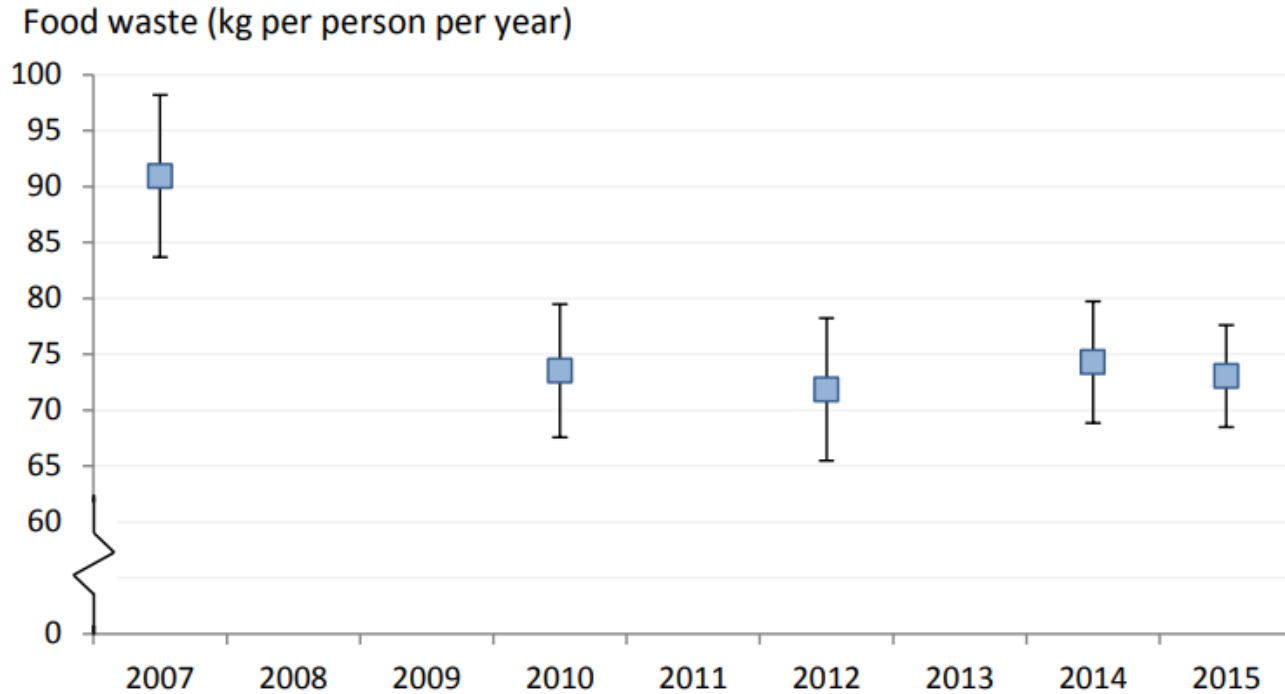


**How does the UK  
measure food  
waste?**

**Household  
food waste**

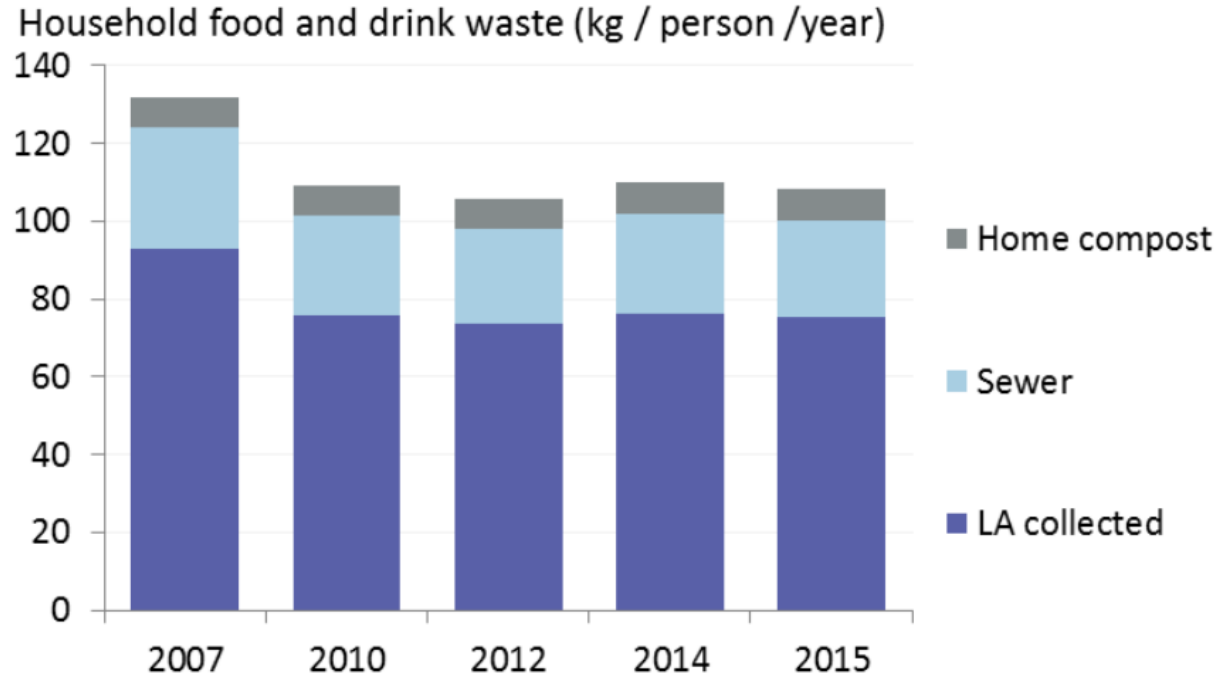


# Household food waste



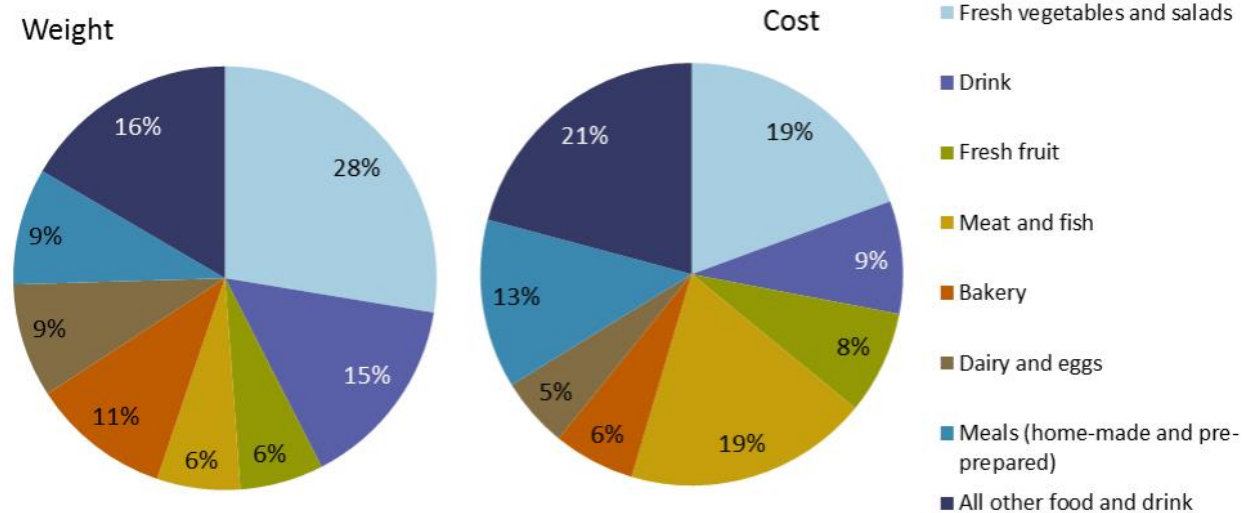
Source: [Synthesis of Food Waste Compositional Data 2014 & 2015](#)

# Household food waste – where?



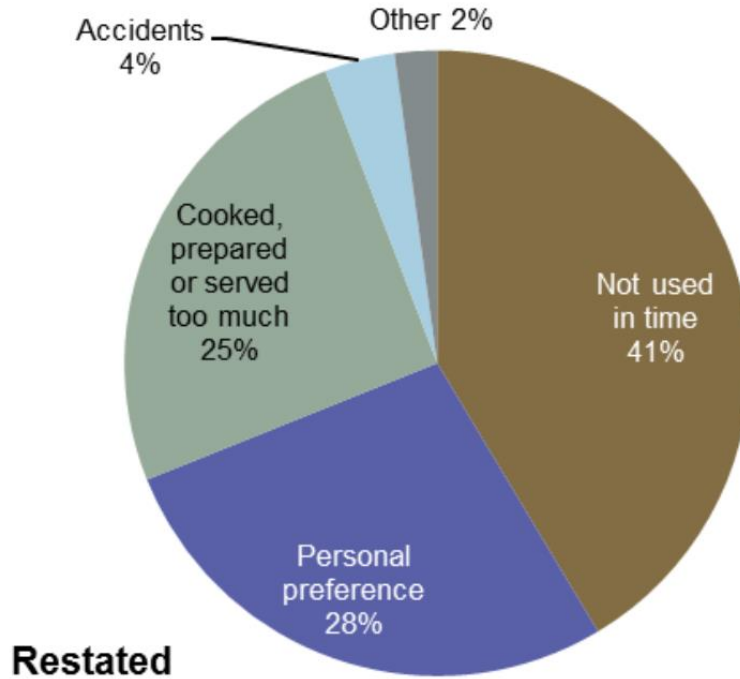
Source: [Household food waste: restated data for 2007-2015](#)

# Household food waste – what?



Source: [Household food waste: restated data for 2007-2015](#)

# Household food waste – why?



Source: [Household food waste: restated data for 2007-2015](#)





# Key Points

- Important to clarify reasons for quantification
- Despite quantifying for 12 years, methods in UK still being refined
- Supply chain: Challenge due to access to FW

# CONTACT US

[tom.quested@wrap.org.uk](mailto:tom.quested@wrap.org.uk)

**Second Floor  
Blenheim Court  
19 George Street  
Banbury, OX16 5BH  
UK**

**Telephone:  
+44 (0)1295 817890**

## Acknowledgements

**Andrew Parry & Billy  
Harris, WRAP**

**[wrap.org.uk](http://wrap.org.uk)**

 **@WRAP\_UK**